



Team 26		
Coach: Dr. Alaa El Din Houssin		
Electrical Engineering	Abdullah Al Eid	Salman Almutrash
Industrial Engineering	Mohammed Abbag	Mohammed Aljedibi
Computer Science	Ahmed Baaqeel	Abderrahmane Balah

AI-driven Saudi Tourism Itinerary Planning Robot

INTRODUCTION

With the recent government's efforts to promote tourism, Saudi Arabia has witnessed a significant surge in visitor numbers. These tourists face issues while planning their trip. So, for these Tourists who want custom cheap itineraries, this product is an AI-based automatic itinerary solution that generates fitted plans based on preference and budget.

PROBLEM STATEMENT

The absence of automated travel planning services in Saudi Arabia makes it challenging for tourists by not offering personalized travel plans, thus limiting their travel experience.

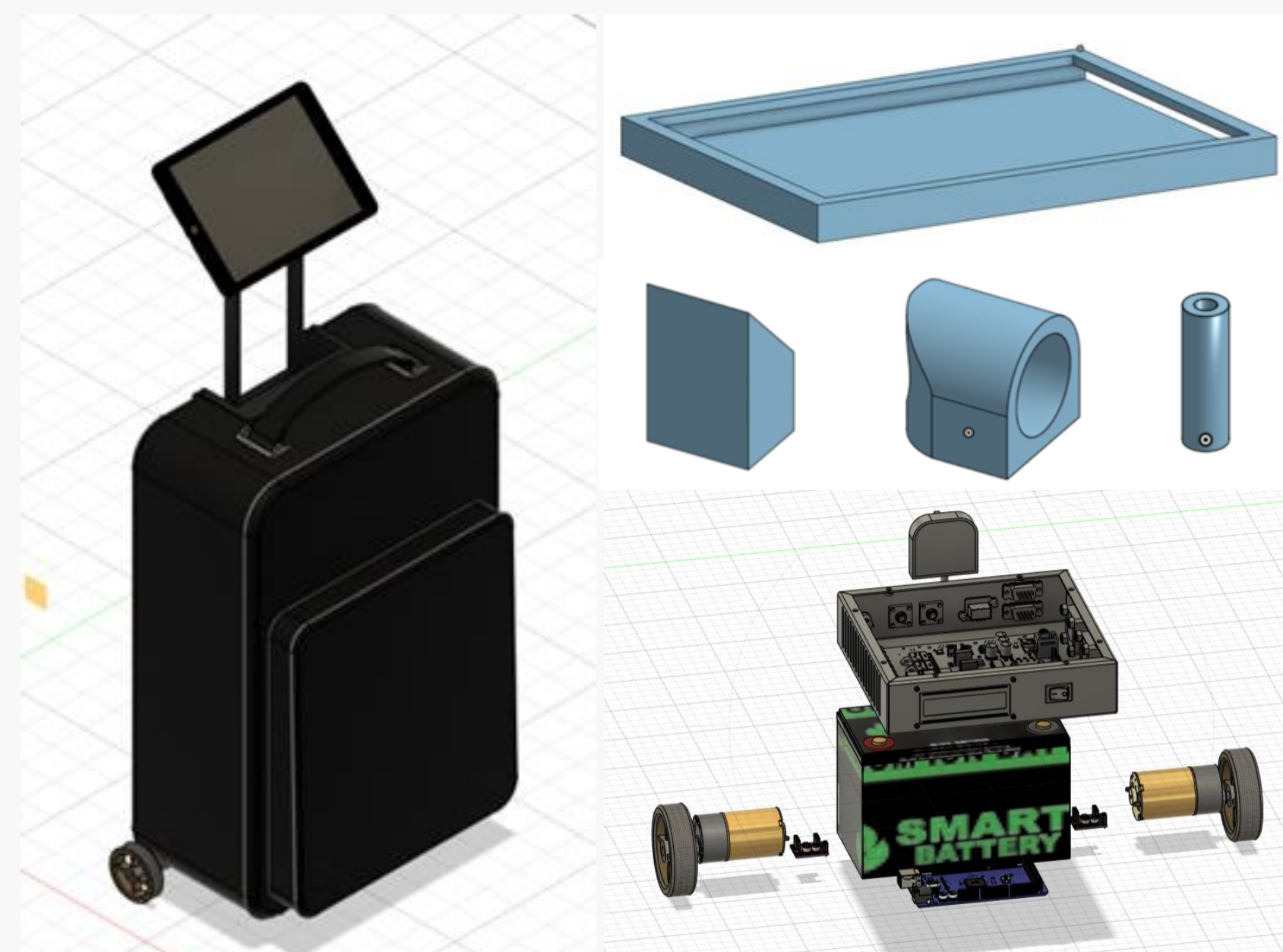
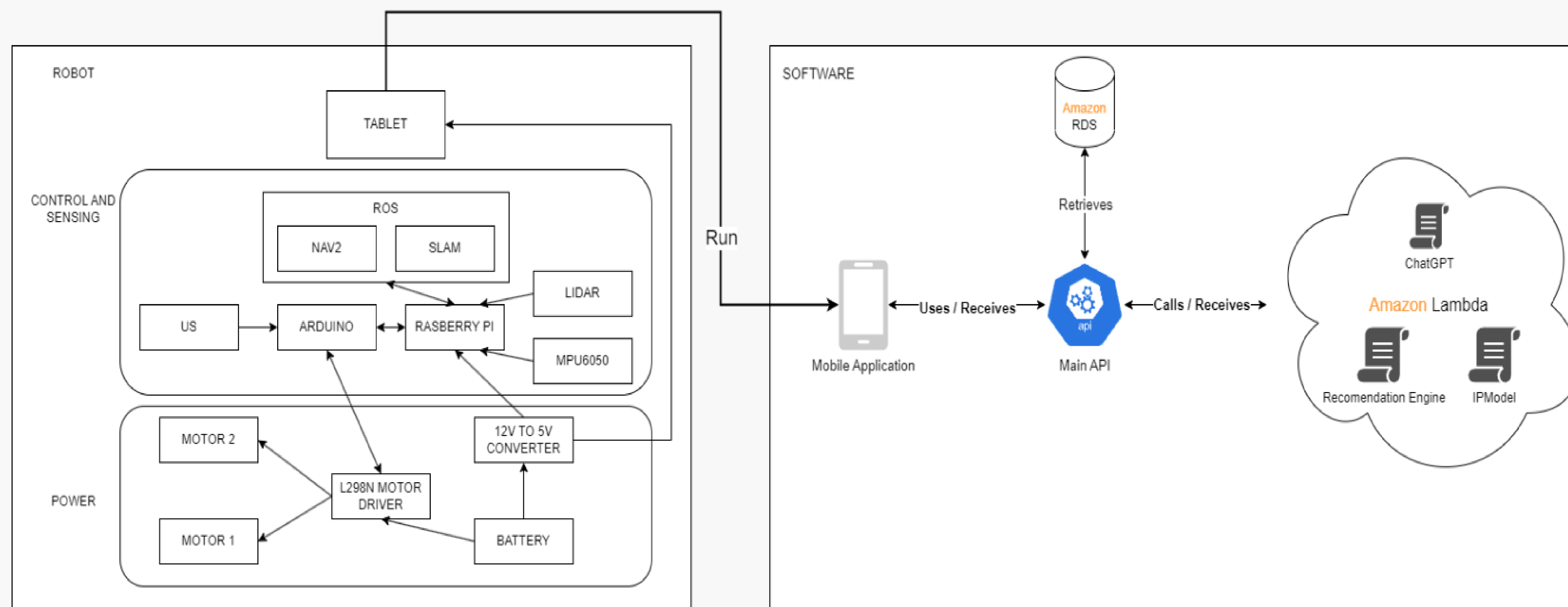
CONSTRAINTS

- Time
- Budget
- Data Accessibility
- Automatic Updating of the Database

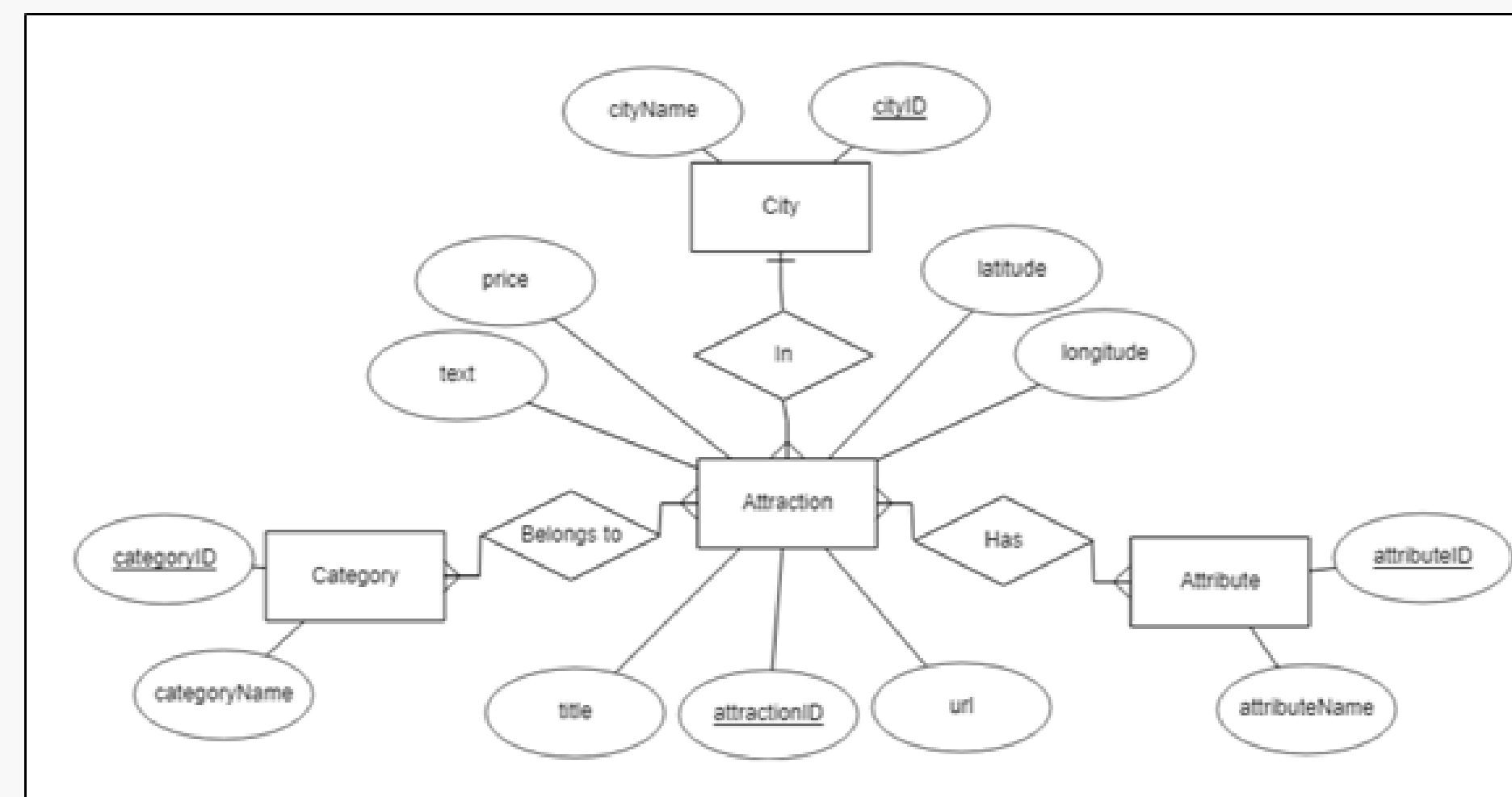
SPECIFICATIONS

1. Percentage of user preferences met **70%**
2. Error within customer budget **5%**
3. Time taken to generate plan **300 s**
4. Number of activity choices **100**
5. Maximum speed of the robot **20 cm/s**
6. Minimum time between charges **1 hour**
7. Number of interactions before itinerary **6 interactions**
8. Dimensions of the robot **120*60*30 cm**
9. Screen resolution **110 PPI**

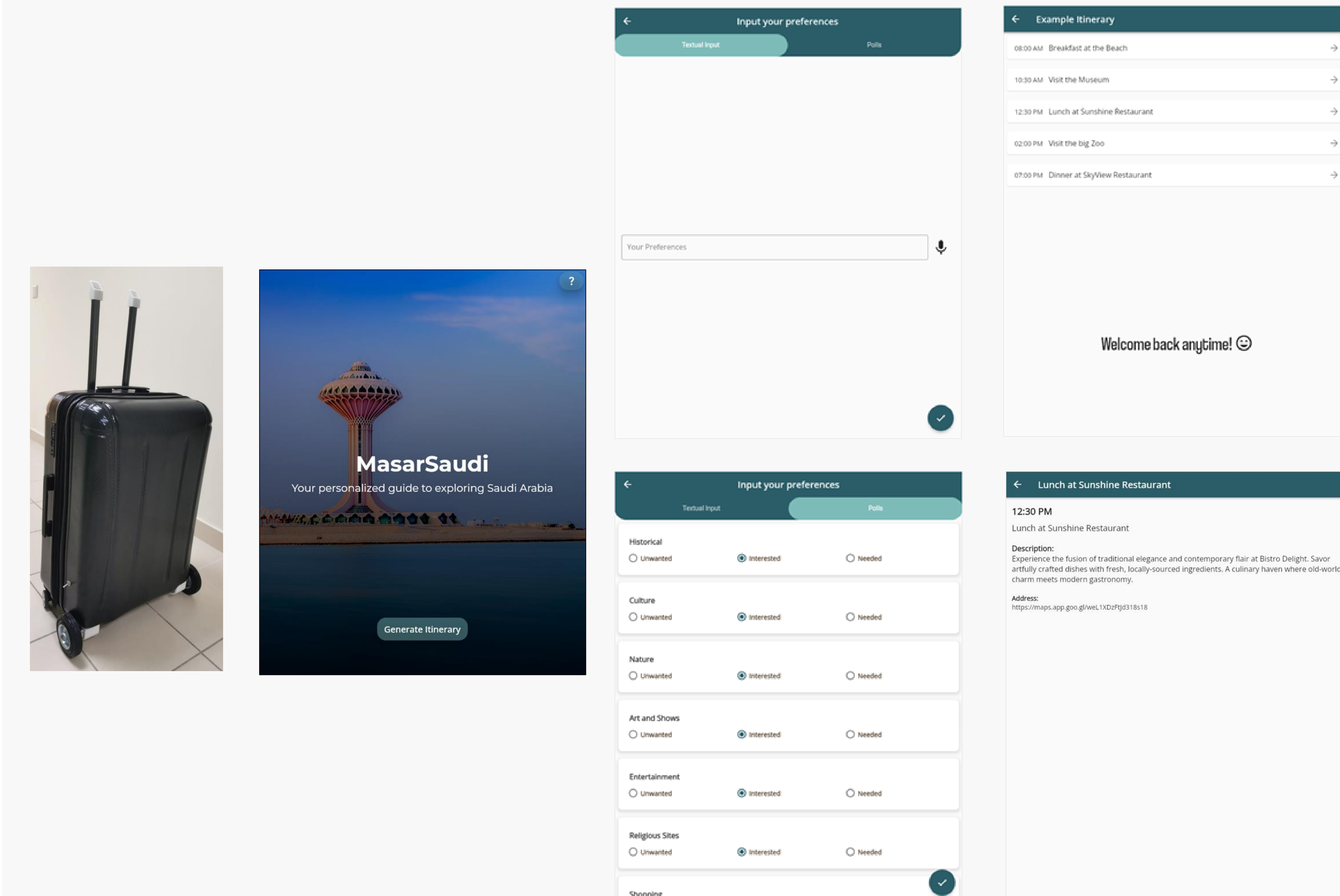
PROTOTYPE DESIGN



City	Frequency
Dammam	666
Al Hafuf	619
Al Jubail	487
Al Oatif	459
Al Khobar	409
Hafar Al Batin	384
Dhahran	194



PROTOTYPE



Proof of specification meeting

1. Ensured through IP	2. Ensured through IP	3. Experimentally
4. Over 300 places	5. Experimentally	6. Power consumption
7. Ensured by App	8. CAD and Measured	9. From device specs

CONCLUSION

Travelers experiencing the project will benefit from personalized travel experiences due to the innovative integration of AI with robotics. This approach addresses existing challenges in the Saudi Arabian tourism industry, leading to new commercial opportunities such as partnerships with local businesses and Destination Management Companies (DMCs). Additionally, it generates valuable, data-driven insights for the tourism sector.